



CORRGAZETTE

OCTOBER IS BREAST CANCER AWARENESS MONTH!

Statistics have shown that breast cancer affects approximately 1 in 8 women at some point during their lives. As women age they become up to 50% more likely to develop breast cancer and is the second most common cause of death among women. Although uncommon, breast cancer can also affect men throughout their lifetime.

October is National Breast Cancer Awareness month. This month the National Breast Cancer Foundation aims to provide help and inspire hope to those affected by breast cancer through early detection, education, and supportive services.

Please visit www.nationalbreastcancer.org for more information on breast cancer and events in your area.

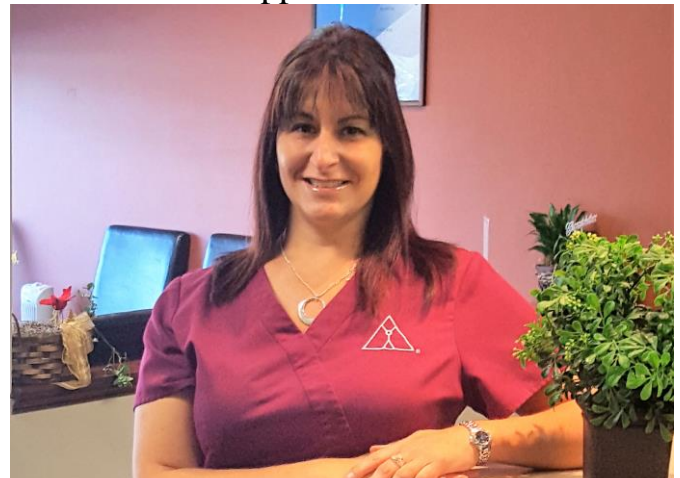


VAL CARON LOCATION: CHANGE IN HOURS

Now that Nicole Fredette CHCP® has completed her maternity leave, she is happy to announce that the hours at the Val Caron Correactology® Center will be increasing. The hours are now as follows:

- Monday: 1pm - 6pm*
- Tuesday: 9:15am - 3pm*
- Wednesday: 9:15am - 5pm*
- Thursday: 10am - 7pm*
- Friday: as needed*

Call 705-897-1811 to book your appointment.



CORREACTOLOGY® CENTER LOCATIONS

BLIND RIVER
705-847-4411

SAULT STE. MARIE
705-949-2855

GUELPH
519-763-2345

BARRIE
705-725-9000
OAKVILLE
289-837-0606

**SUDBURY
(MAIN CENTER)**
705-525-7721

NEWMARKET
905-235-9355
STURGEON FALLS
705-223-2222

MILTON
905-864-9611

TIMMINS
705-360-1116

VAL CARON
705-897-1811

VISIT WWW.CORREACTOLOGY.COM FOR SPECIFIC CENTER LOCATIONS



TIPS FOR CARVING YOUR PUMPKIN:



- Try to get a pumpkin with a green stem – this will be fresher than those without.
- Draw out your plan on the pumpkin before you start carving – that way you can make sure your design will fit before you make a cut.
- Try to hold off carving your pumpkin until closer to Halloween. Also try to carve the pumpkin quickly. If it starts to change shape spray some water on it to maintain its moisture.
- Look for a pumpkin with a thick stem – a thick stem usually means thick walls.
- Make sure you scoop everything out of the pumpkin – the innards will start to rot.
- Remember to have fun!

FUN FACTS ABOUT HALLOWEEN!

Did you know??

- Halloween is believed to have originated from Ireland.
- “Souling” is a medieval Christian precursor to trick-or-treating where the poor would go door-to-door offering prayers for the dead in exchange for food.
- The word ‘witch’ comes from *wicce*; which in Old English means “wise woman.”
- Dressing up scary originated from an ancient Celtic tradition where people would attempt to disguise themselves from real spirits.
- Studies show that half of those who go trick-or-treating prefer to receive chocolate.

ORILLIA HEALTH FAIR

What a great success!



Thank you Jenny Davidson CHCP® (Guelph) and Adam Waszczylo CHCP® (Barrie & Newmarket).

I learned about Correactology® through my mother and brother. In 2005 I pinched my sciatic nerve and was in pain 24/7. I have seen 3 doctors and I had tests done that revealed that I lost my reflexes in my lower right leg from my knee to my ankle. I was taking pain meds every 2 hours but the pain wasn't going away. I decided to give Correactology® a chance. I told myself I have nothing to lose. Correactology® has helped me with sciatica and other issues such as asthma, eczema, even when I hurt my foot going up the stairs. Correactology® was able to help with the pain and get my ankle to heal without meds. I've never felt healthier than I do since I started my treatments. I would recommend others to give Correactology® a chance. Correactology® helps the body heal itself in a natural way.

– Nathalie Pitre-Blais

Would you like to share your Correactology® story? See your Patient Services Coordinator to find out how!